

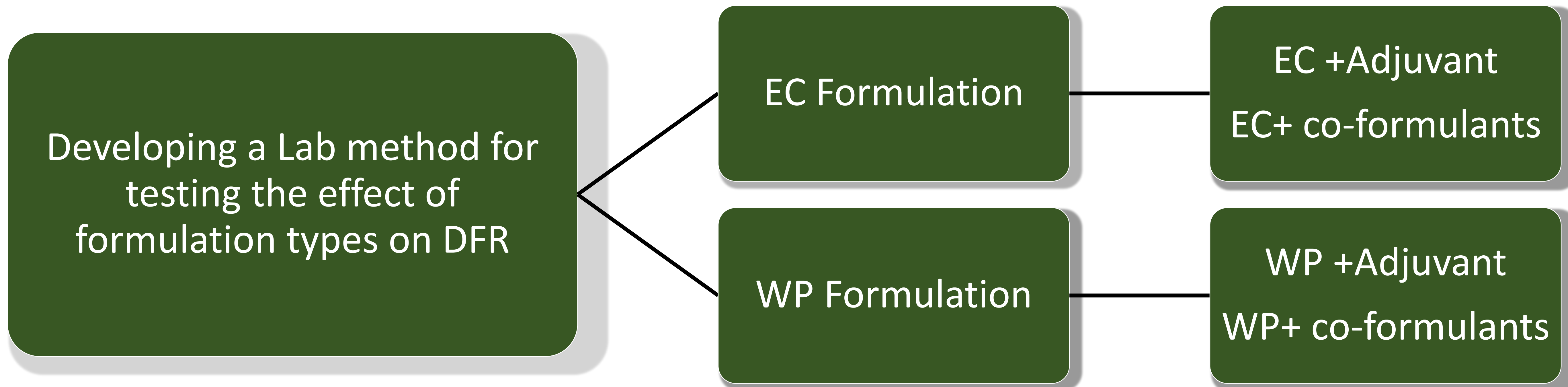
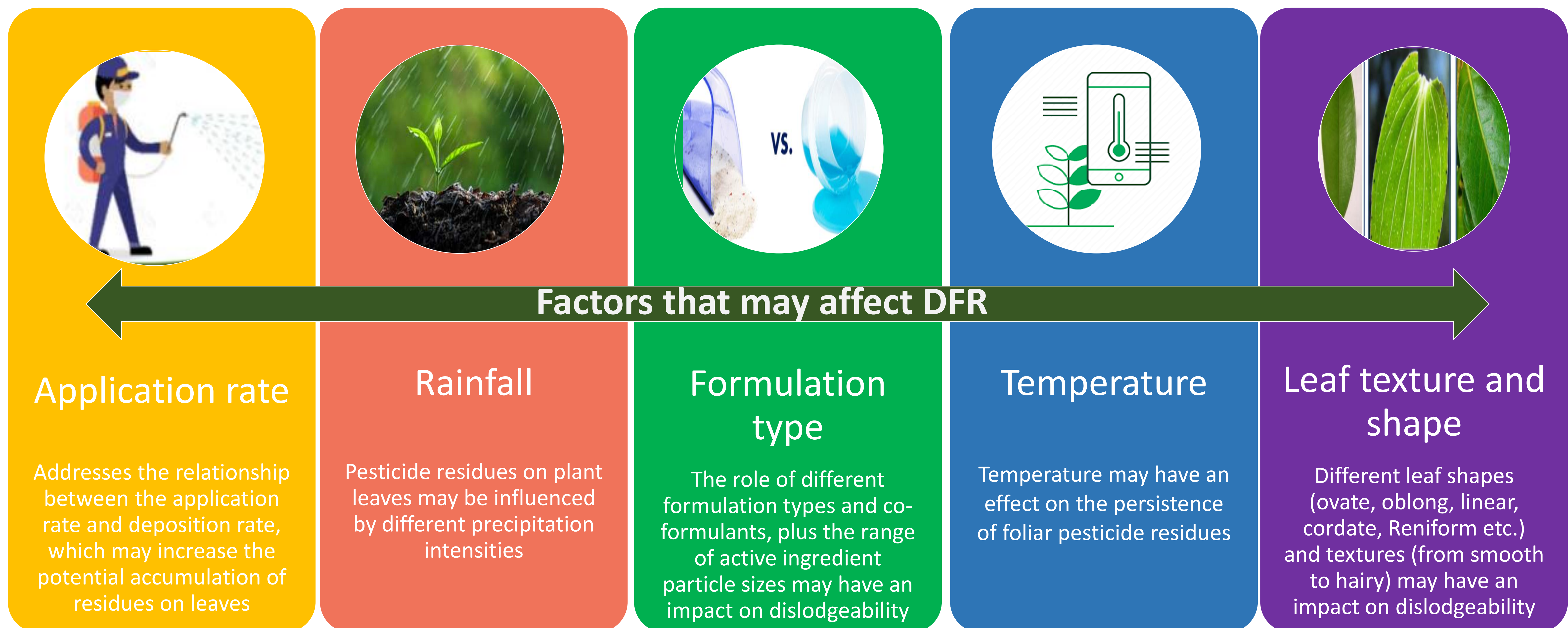
What does dislodgeable foliar residue mean?

Dislodgeable foliar residue (DFR) is the amount of pesticide residue deposited on plant leaves after pesticide application which may be dislodged by people during the performance of various tasks. This can subsequently be transferred to human skin and clothes that may cause potential risk.

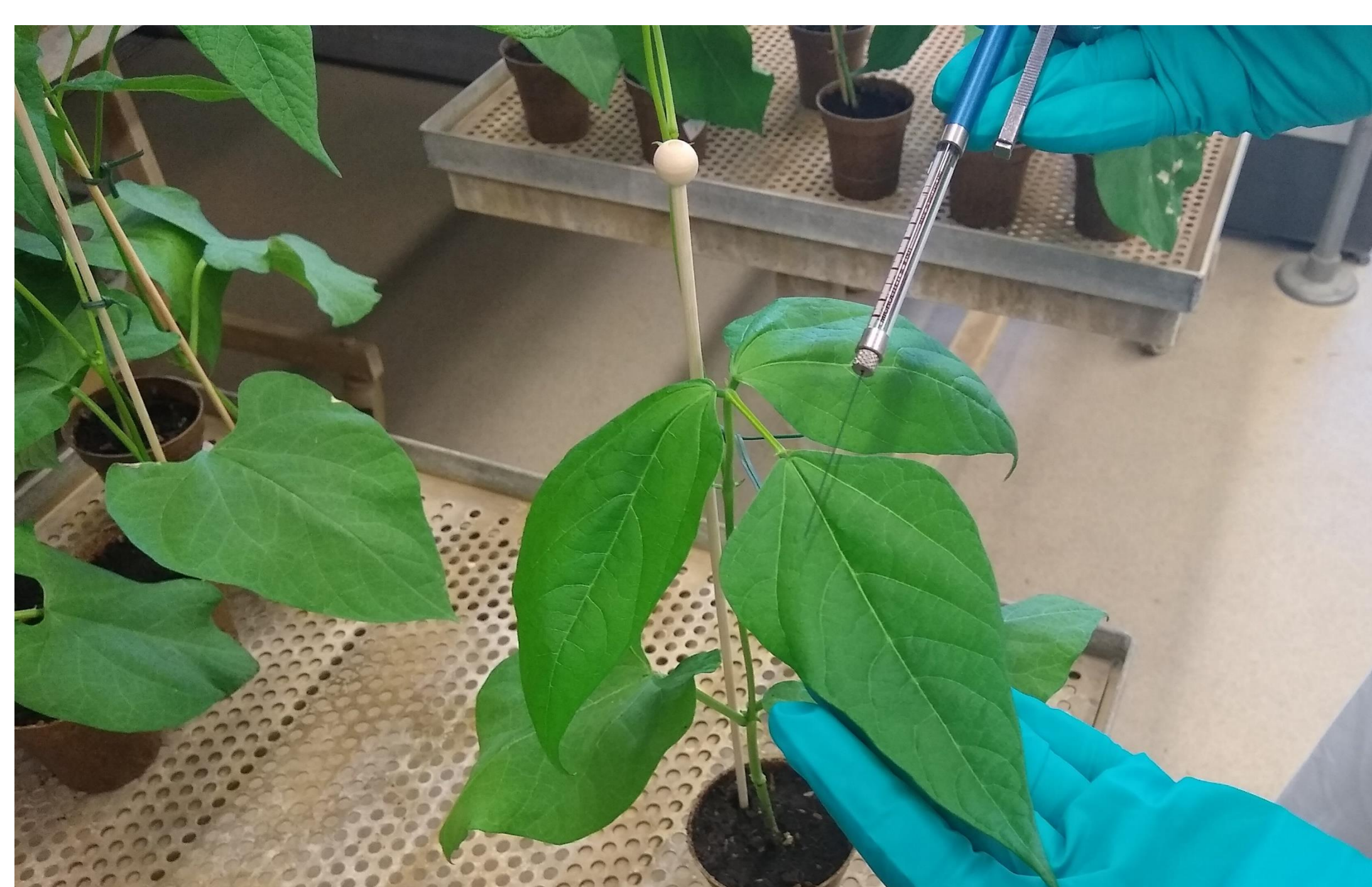


What is the current challenge with DFR data for industry?

The default values for DFR and other parameters in the risk assessment have become more precautionary in the regulatory landscape and the requirements for specific DFR studies are increasing. These studies are costly, time consuming and limited by the crop's seasons due to the unacceptability of extrapolation between DFR studies amongst crops. Dissipation data from DFR studies are used to evaluate the risk associated with post-application exposure to pesticides and to establish a chemical transfer coefficient (TC). This is used to determine restricted entry intervals for cultivated crops.



Micro-pipetting Application



Track Sprayer Application

